

dTIMS CT is a customizable framework application for asset management that seamlessly combines data management and asset analysis into one centralized application. dTIMS CT was designed exclusively to handle and analyze large amounts of data that describe a linear infrastructure. Due to the flexibility that makes dTIMS CT unique, managers now have the ability to integrate not just one type of asset but all aspects of their infrastructure into one central data repository.



dTIMS CT delivers a structured asset management system, where all three fundamental areas; data management, optimized analysis and global reporting all work in complete unison.



Many users are incorporating road, bridge and safety information for cross asset optimization analysis. As a powerful database management system, dTIMS CT efficiently stores data that describes the attributes of what is on, under or beside every foot of roadway in the network.

At a glance

- ✓ Centralized database for all asset information
- ✓ User definable queries
- ✓ Cross asset optimization
- ✓ Multiple budget scenarios
- ✓ Increased efficiency by as much as 50%
- ✓ Unlimited flexibility
- ✓ ODBC connection to other databases
- ✓ Concurrent transformation of data

We provide sustainable infrastructure asset management



Data Management

Centralized Database (SQL Server or Access): Store all of your assets and corresponding asset data in one centralized database.

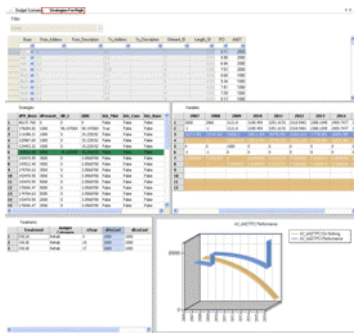
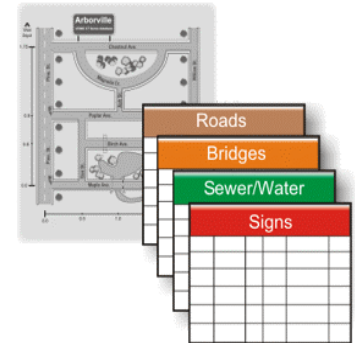
Queries & Transformations: Queries enable you to produce reports on your database which you can send to an external report. Transformations enable you to aggregate different data sources.

ODBC Connector: The ODBC Connector provides the flexibility to connect to external databases and tables through an ODBC connection.

Location Referencing: dTIMS™ CT accommodates unlimited numbers of location reference methods and offers the ability to switch from one method to another.

Image Viewer: The Image Viewer allows you to create a “view” with hyperlinks to various file formats for display.

Cross Section Graphics: Cross section graphics allow you to view a graphical representation of the current pavement structure of a piece of road. You may view cross sections from three points of view: cross section view (from the front), plan view (looking down from above) and profile view (road is sliced length ways along a specific transverse offset which you select).



Optimized Analysis

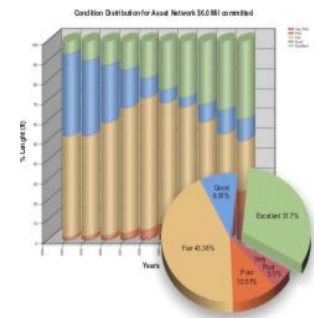
Life Cycle Cost Analysis: A typical dTIMS™ CT analysis consists of two steps, Generating Strategies and Optimization. Generating Strategies constructs a list of strategies for each element. Optimization, chooses one strategy from the list for each element so that an objective function is achieved while not violating some constraints.

Optimization: You need to know the best strategy for each network element in such a way as to maximize the overall benefits and not exceed the yearly budget levels. dTIMS CT Optimization is capable of selecting one strategy from the list of strategies for each element so that the established objectives are met while not exceeding the available budget. You define the budgets and budget scenarios to use during optimization.

Global Reporting

Parameter Reports: Document the structure of your particular system. Examples include reports to list fields in the inventory file, treatment details, list of analysis sets, list of expressions and details and many more. You can send these reports to a printer, the screen or a file (e.g., html).

Analysis Reports: View certain characteristics of your network graphically. Examples include: *Efficiency Frontier report*, *Condition Distribution Report*, *Backlog Report*, *Remaining Work Report* and many more. All graphs are completely customizable. You can change the colours, footnotes, legends, rotation and so on.



We provide sustainable infrastructure asset management

PMS
CONSULT

PMS-Consult . Karlsgasse 5 . A-1040 Wien . Austria
Phone +43 699 19 47 44 22 . office@pms-consult.at
www.pms-consult.at

viagroup

Viagroup GmbH . Technoramastrasse 10 . CH-8404 Winterthur . Switzerland
Phone +41 52 244 33 02 . Telefax +41 52 244 33 07 . info@viagroup.ch
www.viagroup.ch