



dTIMS wf is a virtual representation of your actual dTIMS work similar to a work document that is being transferred from one step to another. dTIMS (wf) consists of a sequence of connected dTIMS steps or instructions similar to a flowchart. Each branch in the flowchart passes instructions to dTIMS which consists of one or more simple or complex dTIMS processes.

## Automate Your dTIMS Routines

dTIMS wf can help save you time by automating your manual dTIMS CT routines. For example, the task of preparing for a new analysis year typically involves a series of steps which includes: creating new analysis segments, resetting new analysis segments, generating new strategies, optimizing budgets and more. To automate this process you could create a workflow for each step in the process. This would significantly reduce the amount of time you spend working in the software handling each of these dTIMS CT processes manually, thus freeing your time up for other tasks.

## Standardize your dTIMS Processes

In addition to the time you will save, dTIMS wf enables you to standardize your dTIMS CT processes thereby eliminating errors that may occur manually such as missing steps or processing steps in the wrong order.

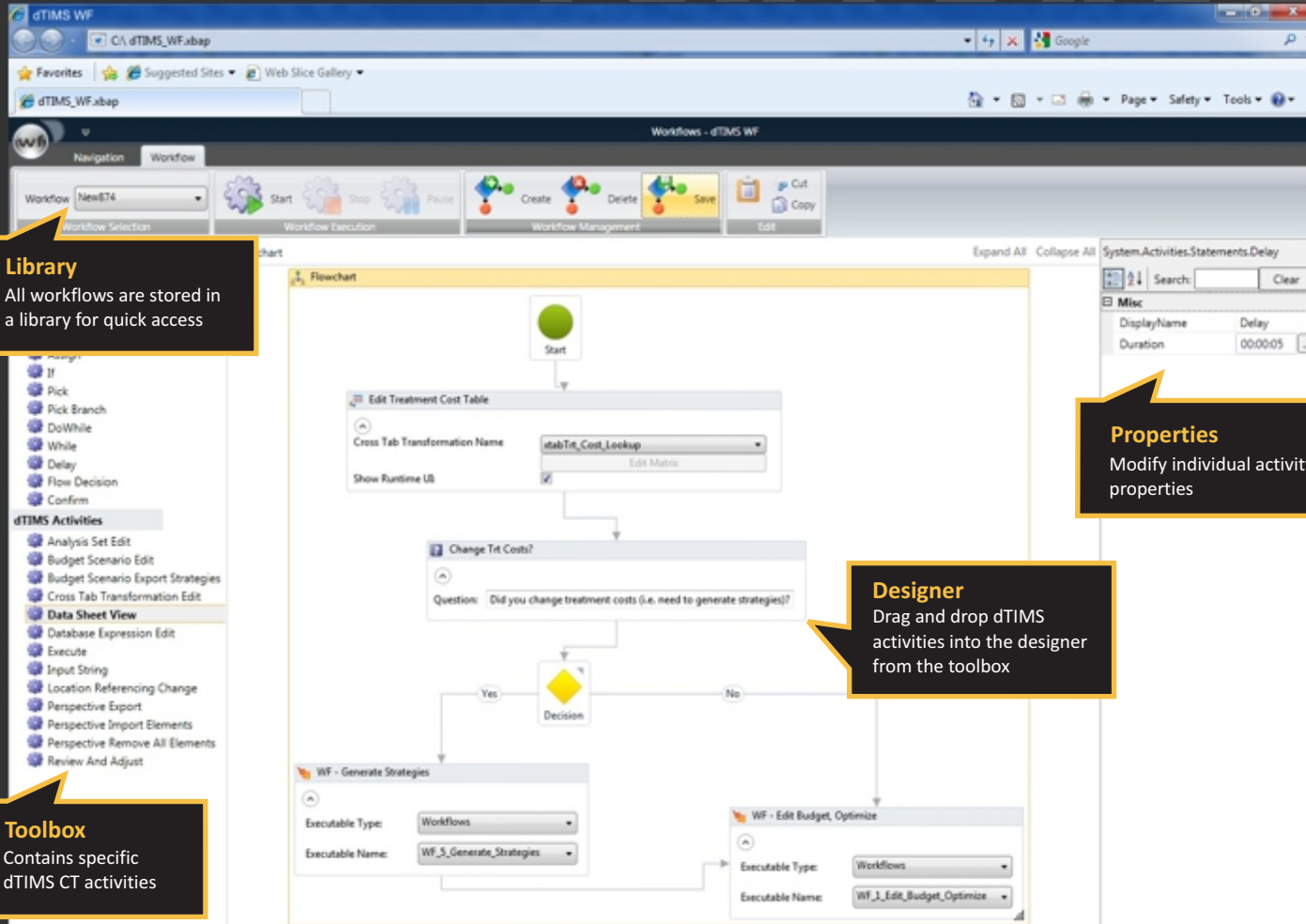
## Document your dTIMS Processes

dTIMS wf is a visual wizard of your dTIMS CT processes that you develop and edit so your procedures are documented and can be shared with others in your organization. This allows new users of dTIMS to get up to speed quicker as they can run documented workflows created previously. Seasoned dTIMS CT users can create and edit their own workflows.

### KEY BENEFITS

- Increased productivity
- Simplification of process
- Use templates to save and share your workflows
- Use your existing web browser
- No coding required
- Less software training
- Standardization of dTIMS processes
- Documentation of dTIMS processes

# FEATURES



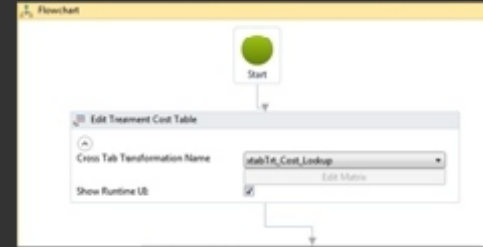
**Library**  
All workflows are stored in a library for quick access

**Toolbox**  
Contains specific dTIMS CT activities

**Properties**  
Modify individual activity properties

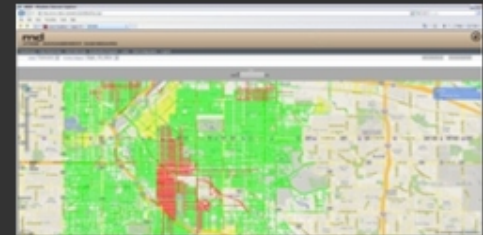
**Designer**  
Drag and drop dTIMS activities into the designer from the toolbox

## 1 Create your workflow



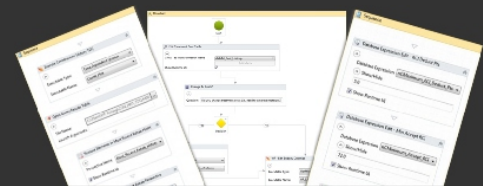
Drag the conditions and activities that define your workflow into the designer

## 2 Execute & edit workflow



Execute your workflow, then view the results in dTIMS md. Modify your workflow based on what you see.

## 3 Distribute workflow



As a dTIMS administrator or consultant you can distribute workflows you have created to other dTIMS wf users in your organization or externally.

